



Get all the latest highways news on Twitter

You can receive regular updates on our activities across the business via Twitter @IslandRoads.



**Dear all,
We are well into this year's programme of road improvement work. Having previously**

concentrated on the major strategic routes (over 90 per cent of which will have been upgraded by the end of the year), this year there is more focus on improving lesser-used, typically residential, roads.

There are of course a number of main roads also in the programme for this year – for example we have recently completed the first phase of improvements to Fishbourne Lane which is a particular challenging project given it is the single access to Wightlink's busy Fishbourne to Portsmouth terminal.

The delivery of this year's programme will mark the end of the Core Investment Period (CIP) which is the first seven years of road improvement during which the roadwork activity is at its most intense. By the end of this period, Island Roads are required to bring the average condition of the road network up to the standards set out in the contract.

After CIP, we enter into the Lifecycle Maintenance aspect for the contract. During this period, we will be responsible for maintaining the network to the agreed standard. In order to fulfil this requirement, it will be necessary to undertake ongoing road treatment schemes. Though this programme will not be as intense as that seen over the past seven years, there will nevertheless be a significant amount of activity. It certainly does not mean that roads left untreated at the end of CIP will not be improved in the coming years.



Pictured: The new road surface on Shanklin Esplanade

This year's programme of work has been largely influenced by the latest data gleaned from our annual survey and other inspections processes. This means that those roads in the very worst condition according to that data are those prioritised for improvement in the current programme.

Alongside the highway work, we remain busy in other areas of the CIP programme, notably improving footways and on our annual structures programme. You can read more about this below.

In the Autumn, and subject to confirmation by the Isle of Wight Council, we will be undertaking work on behalf of the local authority to improve traffic flows on the approaches to – and across – St Mary's Roundabout in Newport.

This will be a major scheme in several phases, some of which will involve delays to road users despite the efforts being taken to minimise disruption. A full communications plan has been agreed

and will be rolled out as soon as the scheme details have been finalised.

We do endeavour to communicate activity to businesses and residents and one method we use to do this is our Twitter feed. Please follow us @Islandroads.

Can I once again thank everyone in the community for their support and understanding as we continue our work to improve and maintain the network. Your support helps us complete our work as swiftly and safely as possible and is very much appreciated by all of us at Island Roads.

**Steve Ashman,
Service Director, Island Roads**





Look out for information on major junction improvement

The Isle of Wight Council is developing plans, with Island Roads, for a major scheme to improve traffic flows across St Mary's Roundabout in Newport.

The council has said it wishes Island Roads to commence work on the scheme in the Autumn. At this stage, there are several outstanding details to be addressed.

Behind the scenes, the IW Council and Island Roads have developed a comprehensive information campaign that will be launched once scheme details have been finalised and Island Roads have been given an instruction to carry out the work. Detailed discussions have already been held with key stakeholders including St Mary's Hospital, those businesses most affected by the project, emergency services and elected members.

As has already been stated there will be periods within the 15-month project when, despite detailed planning to minimise this, there will be disruption to road users. The communications plan will give more details on where and when this disruption will occur.

A webpage accessible through the homepage of www.islandroads.com will also contain regular updates on the progress of the scheme.

2019 road upgrade programme progressing



Work to upgrade the highways network continues apace.

With much work already completed on the strategic network of main roads, there is increased focus on treating lesser used residential roads.

The programme this year has been determined using the latest survey data and as a result the roads in the worst condition according to this information are being prioritised for improvement.

Over the summer, this work is being undertaken by three day crews. Once again, the programme is mindful

of the need to keep open those routes most important to tourism.

While the focus is on residential routes, a number of main roads/routes have also been treated including schemes to improve a section of Forest Road, Newport, Cowes Town Centre, Hale Common and Canteen Road at Apse Heath.

We were also delighted that Britain's Got Talent star Derek Sandy played a small set to declare Shanklin Esplanade open after a refurbishment project.

Fishbourne Lane works

Work is underway on work to resurface Fishbourne Lane (pictured).

Given the nature of this route – which serves Wightlink's Fishbourne ferry terminal – the work is being phased to reduce the impact on the vital port operation.

The first of three work phases – either side of the school holiday period – was completed successfully in July.

The remaining reconstruction works will take place in the autumn in two phases starting Monday 2

September and due for completion by the beginning of November.

Information boards on site will be kept updated to alert residents to any change in timescales and a dedicated section on the homepage of Island Roads website www.islandroads.com will also provide the latest information.

The work will affect some weekday late night Wightlink services. Further information on this can be found on the following link: www.wightlink.co.uk/information/fishbourne-lane-roadworks



Brighstone Church delighted with resurfaced pathways



The grounds of St Mary's Church in Brighstone are now easier to access thanks to a staff volunteering project by Island Roads.

A team of eight employees used their skills to resurface the pathways in the church yard to create smooth, flat surfaces to help those with wheelchairs, mobility scooters and pushchairs.

The work was carried out at the height of the summer, making for hot work for the team who had to bring all the materials onto site by hand as the church entrances were too narrow for machinery.

Paul Gibb-Narey, Highways Supervisor at Island Roads, said: "We have undertaken a lot of highways improvement work in the area recently so were delighted to give something back to the community through this project. The people of Brighstone have always been very welcoming so it was a pleasure to help the church to improve their pathways which are well used by locals and visitors to this picturesque village."

Structures continue to be upgraded

Island Roads is continuing a busy programme of work to upgrade and improve the structures that support the Island's road, cycleway and footway network.

The programme runs throughout the year and has already delivered some improvements to well-used structures including bridges, retaining walls and culverts across the Island.

Medina Quay Bridge (*pictured below*) is among structures to be upgraded so far this year.



The project involved replacing the bridge deck and supporting beams, leaving the new structure less prone to deterioration and therefore requiring less maintenance.

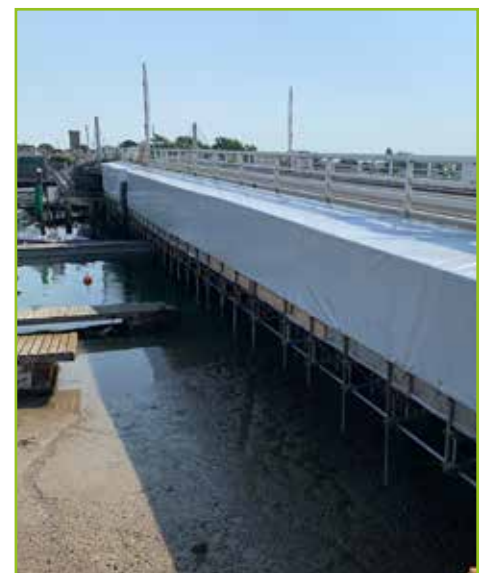
The bridge had been closed since 2017 when it was found to be suffering from severe corrosion due to the effects of the brackish (slightly salty) tidal flows.

As part of the work, new safety barriers were installed on the new bridge to protect the adjacent footbridges and anyone on them.

Another improvement scheme used a hi-tech solution to seal and strengthen the culvert underneath Victoria Avenue/ Shanklin Road, through which Scotchells Brook passes.

Island Roads used an inflatable resin 'balloon' liner which was pulled through the structure, sealed at both ends and then inflated to fit the aperture. UV lighting was then used to cure the resin, providing a protective, hard-wearing liner which will strengthen and protect the original brickwork.

Because the brook is several metres below road level, a special temporary ramp was constructed to help move the



necessary equipment and materials on and off site.

The inflated resin liner technique has previously been used by Island Roads to perform a similar function at several smaller bridge structures, including Holbrooke's Bridge in Bouldnor – home to the award-winning 'elevator' which assists migrating eels.

Work to repaint Yarmouth Bridge (*pictured above*) is ongoing.

Good Lighting award for Island Roads



Island Roads has been presented with a Campaign to Protect Rural England Good Lighting Award for its work to upgrade the Island's network of streetlights.

The award from the Island's Campaign to Protect Rural England branch (CPRE-IW) recognises the contribution the installation of new LED lighting has made to reducing light pollution across the Island.

This is the third time Island Roads has received a CPRE-IW Good Lighting Award.

John Langley, CPRE-IW Good Lighting Awards Coordinator, said: "Since Island Roads completed its highways illumination project, international light pollution monitoring satellites, together with Island-wide sky quality readings, show that our skies are now on a par with the best in the world and we believe that much of that is down to the good work carried out by Island Roads.

"Thanks to their work we are now in a position to make a bid to have the southern part of the Island designated as an International Dark Skies Park which involves submitting evidence to the International Dark-Skies Association in the USA for accreditation."

The street lighting improvement programme involved enhancing or replacing 12,068 streetlights across the Isle of Wight. The new lighting uses less energy and requires less maintenance making it more cost effective and better for the environment than the previous lighting system.



Watching out for wildlife

Island Roads has joined the front line in the battle against the Asian Hornet. In a new partnership with the Isle of Wight Bee Keeping Association, staff at Island Roads have been trained to identify the invasive creatures which pose a significant threat to our local bee population.

Asian Hornets, which are native to South East China, have been slowly travelling north through Europe, thought to have been introduced via timber freight and plant exports from the Far East. In recent years the creatures have colonised Jersey and parts of Brittany in France, with fears the Island could be next.

In conjunction with the Island's Bee Keeping Association, Island Roads has produced a briefing note to distribute to scores of its staff who work year-round in all corners of the Island, making them ideally placed to spot the unwelcome creatures.

Asian Hornets have darker bodies

than our native European Hornet and have distinctive yellow legs. They are also slightly smaller than our hornets, at around 3.5cm in length. They feed on bees, mayflies, moths and butterflies, all key pollinators and a crucial link in the food chain of our native wildlife.

Island Roads recently welcomed Liz Van Wyk from the IW Bee Keeping Association to talk to staff about the invasive insects and their threat to our delicate eco-system.

Liz Van Wyk said: "It is important that as many people as possible are aware of the Asian Hornet as their vigilance will be key in preventing the creatures from settling here. We would like to thank Island Roads for taking such an interest."

Anyone who thinks they have seen an Asian Hornet should report it, with photo, to alertnonnative@ceh.ac.uk or via the association's Facebook group 'Isle of Wight Asian Hornet Watch'

Making a difference – supporting Local Heroes 2019

It is that time of year again, when Isle of Wight Radio holds its annual Local Heroes Awards.

The awards celebrate the amazing range of good work carried out by people across the Isle of Wight. This year (2019) there are 13 award categories, ranging from Fundraiser of the Year to the Young Person Award and Island Roads is, once again, very proud to sponsor the 'Make a Difference Award'.

As a local company, we think it's important to make a difference to our Island community. Through

our volunteering scheme and charitable foundation, our staff have donated hundreds of days to help local causes, doing everything from gardening and beach cleans to goat herding! We know the positive impact this has and are keen to highlight the work of others who are also making a difference on the Isle of Wight.

Nominations for this year's Local Heroes Awards are now open: iwradio.co.uk/2019/07/01/local-heroes-2019-nominations-are-now-open



Island Roads makes a mark at primary school

grids as well as hop-scotch and some miniature road markings.

Spencer was approached by Lorna Cotton chair of the PTA which had wanted markings put down on the playground but had neither the expertise nor the funds to undertake the project.

Lorna said: "The reception class and year one pupils are already really enjoying it. It is fun, it helps with learning and is also ideal for teaching them basic road safety too. We can't thank Island Roads enough.

Spencer said: "It was quite a difficult thing to design because we were keen to fit in as much as we could in a relatively small space.

"But we are pleased to have been able to help out such a good school and we hope it serves its purpose."

Our staff have also volunteered to assist work at the Phoenix Project where a computer room was re-painted and Brook Church where vegetation was cleared from an overgrown area.

Island Roads has been given top marks after creating a new activity area at the Bay CE Primary School in Sandown.

Island Roads with its line-painting partner WJ South West have marked out a series of activities at the school following a request for help by The Bay's Parent Teacher Association (PTA).

The area was designed by Island Roads lining supervisor Spencer Jarman, who also has a daughter Sienna, five, at the school and painted by Dan Jacobs and Michael Taylor from WJ South.

The complex design features games as well as learning and road safety teaching aids. It includes a large caterpillar, two 100-square

IW Foundation grants update

Around a dozen local good causes have now applied for grants of between £3,000 and £16,000 from the Isle of Wight Foundation 2019.

Established by Island Roads in 2014, the foundation supports charities, community groups and local good causes that help to tackle social exclusion on the Isle of Wight.

So far, more than £400,000 has been given to Island groups, ranging from projects providing transport for the elderly to helping people with disabilities to access watersports activities.

"Each year we have the difficult task of selecting the applicants which meet the foundation's criteria for support," said Philip Horton, Chair of the Isle of Wight Foundation.

"After drawing up a shortlist of projects with the help of a community representative, we feel it is really important to visit each organisation to get a better understanding of how support from our foundation could help to build better communities or improve access to employment for those living on the Isle of Wight."

Since its launch, the Isle of Wight Foundation has supported more than 40 projects, the most recent being First Act 2011, West Wight Community Access (FYT Bus), RAF 1024 Squadron Air Training Corps, Brading Community Partnership, Care in the Garden, The Phoenix Project, The Way Forward Programme, Isle Access, Waterside Community Trust, Hampshire & Isle of Wight Wildlife Trust and The Common Space.

Care in the Garden grows thanks to Island Roads Foundation



Wootton-based Care in the Garden is set to grow thanks to the support of the Isle of Wight Foundation.

The not-for-profit company which works to bring the community together by using gardening to help change lives has just taken delivery of a much-needed van to transport its teams of supported workers and supervisory staff to and from jobs.

The Mower Men (pictured above), as the team is called, provide garden maintenance

and grass-cutting for community projects including for local town and parish councils, private nursing homes and other private business contracts. The work provides those involved, many of whom have learning disabilities, a chance to experience the social and economic benefits of work in a supportive environment.

The vehicle has been purchased using an £11,000 grant from the IW Foundation. The Foundation comprises the companies

behind Island Roads and each year provides grants of between £3,000 and £16,000 to give support to projects that tackle social exclusion.

The Care in the Garden van has been sourced by local company Bartlett's and, as well as being able to transport a work crew of eight, it also has a basic kitchen onboard from which staff can prepare food and take respite breaks.

Under the IW Foundation grant scheme, all projects receiving aid are 'sponsored' by an Island Roads employee to help develop links between the company and the Island community.

The Isle of Wight Foundation is funded by Ringway Island Roads, Meridiam, VINCI UK Foundation and VINCI Concessions who together make up the partnership behind Island Roads.

