

FactSheet

www.islandroads.com

July 2021

Improving and upgrading the Island's footways

A guide to our footway improvement work on the Island

Under the Highways PFI contract we are working to repair and improve the 756 kms of footways (pavements) across the Island to make walking safer and more enjoyable.

The work involves bringing the average condition of the footways across the Island up to the required standard. In some instances, this means simply carrying out repairs, but other footways may require reconstruction and/or resurfacing to reach the required standard.

Prioritising and programming work



Footway work can be carried out all year round, although we try to complete as much of this work as possible in the drier months to minimise disruption. We also carry out this work during the daytime.

Some of this work has been subject to delays in order to accommodate work by WightFibre as they roll out Superfast Broadband across the Island. It makes sense to wait for these works to be completed rather than digging up newly laid surfacing. We are working hard to coordinate this combined programme of works.

In addition, footways are subject to regular inspection and maintenance year around and any necessary repairs completed. It should also be noted that utilities that carry out work on pavements are required to reinstate the surface to the required standard after the finish their work.

Keeping people informed

To help ensure people are kept informed, we notify all properties directly affected by our work with letters, usually two weeks before work is due to start. The letters advise of approximate dates and proposed hours of working with maps showing the location of the work and advice on waste collections, access to properties etc during our work.

We update yellow information boards on each site with the exact dates of work and we advise residents to read these signs frequently, once they have been erected, to keep up to date with any changes as this is often the quickest way to alert people to sudden changes, for example, where weather affects our work.

Once on site, we try our best to liaise with residents to keep them informed about the progress of our work and anything that might affect them.



Dropped kerbs

The purpose of a dropped kerb, or crossover as it is sometimes known, is to provide easier access for vehicles moving between public highways and off-street parking areas.



If the kerb outside your home has already been dropped and was done formally through the council, we will replace the dropped kerb as before when completing any footway works.

Any requests for new dropped kerbs need to follow a formal application process, which looks at whether planning permission is required and whether the site is suitable.

For more details visit the forms page on the main menu of our website or search for dropped kerbs at www.islandroads.com

Footpaths

We are not responsible for the majority of rural footpaths on the Island, these come under the responsibility of the Isle of Wight Council Rights of Way Team.

However, we are involved in the maintenance and upgrading of some shared-use paths (for cyclists, pedestrians and horses) like this one at Horringford (pictured right). Here, 100 metres of the old timber boardwalk, which was prone to deterioration, was replaced with a wider and more durable stone causeway making it easier for everyone who uses that path.



Access to parking and property during works

We try wherever possible to maintain parking and access to properties and businesses during our work where it is practical and safe to do so, but in some cases the nature of our work means that we must restrict parking or access for short periods where we are carrying out work across a driveway or moving heavy machinery so this can be completed as quick and safely as possible. Pedestrian access via an alternative footway is maintained wherever possible.

Overhanging hedges

Most of the hedges on the Island are the responsibility of local land and property owners and they are responsible for ensuring that their hedges do not overhang or obstruct the footway. It is important for all pedestrians that these are kept clear but particularly for those with sight or mobility problems, wheelchair users and pedestrians with pushchairs/prams who might otherwise have to step off the footway into the road.

It is Island Roads' responsibility to maintain the safety of the highway network and to ensure that landowners responsible for any hedges bordering the highway maintain them to avoid problems.



When Island Roads becomes aware of a hedge requiring maintenance, an "Overhanging Hedge Notice" is served on the landowner or occupier under the Highways Act 1980. This gives the landowner 14 days to undertake the necessary maintenance work.

In the event that the maintenance is not carried out and that no contact has been made with Island Roads, Island Roads may carry out the work itself and recharge the landowner.

Whether landowners cut the hedges themselves or use a contractor to carry out the work, all debris resulting from cutting the hedge must be removed

from both the footway and the road and the work must be carried out in a safe manner which does not put themselves or other road users in danger.

We will also contact residents directly if there are other obstructions on the footway e.g., planters that may impede access for pedestrians and ask that these are relocated or removed.

Weeding



All hard surfaced areas of the adopted highway are treated to control weed growth three times per year as agreed with the Isle of Wight Council.

Street cleansing crews remove weeds manually working with mechanical street cleansing crews. In certain locations such as large, paved areas it may be necessary to apply an organic based herbicide, however our environmental approach is to use manual methods as much as possible.

Before completing our footway resurfacing works, we remove any weeds by hand and spray the area with an organic herbicide.

Leaf litter/fallen branches

Additional mechanical and manual sweeping resource is deployed between October and December for the leaf fall season. Locations that experience increased leaf fall are scheduled for regular visits to remove leaf litter and branches from the pavements.

Footway cracking/defects

From time to time, our footway treatments can be affected by a variety of issues causing the surface material to crack or other defects to appear. This can include: the weather affecting materials when they are being laid, groundwater seepage or ground movement.

We try where possible to anticipate anything that may affect our surfacing treatments and/or carry out preparation works before we complete it, but sometimes these issues arise through circumstances beyond our control. However, all our work is carried out to a specified contract performance standard. We carry out our own checks to ensure these are met. If any works have failed these tests, for whatever reason, they will be rectified as soon as practically possible, or as part of a programme of work, and at our cost.

Improving accessibility

Island Roads and the Isle of Wight Council have been working in partnership to carry out a programme to install accessible pavements with tactile surfaces across the Island.

In most cases this has involved pedestrian crossing points with dropped kerbs and tactile paving. Further info can be found at:

<https://islandroads.com/work-paves-the-way-for-improved-pedestrian-access/>



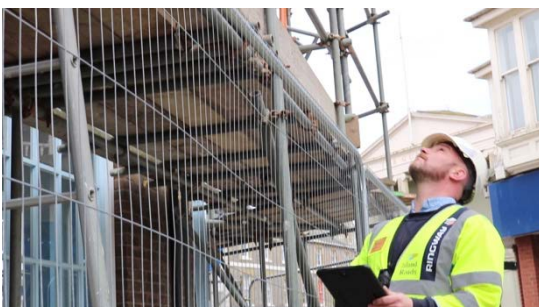
Parking on footways

Driving on the pavement (footway), partially or fully parking on the pavement and causing an obstruction are all illegal. However, Island Roads are not responsible for the enforcement of this, the responsibility for enforcing issues relating to obstruction of the pavement falls to the Isle of Wight Council Parking Services Team and enforcing the law in relation to driving on a pavement, can only be undertaken by the police.

Roadworks signage on the footway

Roadworks signs are put out by both contractors working on behalf of Island Roads for our roadworks and by Utility companies carrying out their own works. Sign locations should balance the need to inform highway users and to ensure footways are not blocked or made hazardous. If signs are thought to be dangerous or obstructive, they should be reported to Island Roads via info@islandroads.com

Skips, scaffolding and hoardings



Scaffolding, builders' skips and temporary hoardings all require a permit if they are to be placed on the highway. This is a requirement of the Highways Act 1980.

Further info can be found by searching our website www.islandroads.com for Skips and Scaffolding Licences or visiting the Forms page on the main menu of our website.

Find works in your area

You can click on the current works tab on our website <https://islandroads.com/current-works/> to see the works Island Roads are carrying out each week across the Island.

You can view a map of all roadworks on the Island and identify who is carrying out the work in a particular location using our 'Roadworks Live' tab on the main menu of our website www.islandroads.com Alternatively you can go direct to One.Network via the following link <https://one.network/custom/isleofwight/>

Report a problem

To report a footway resurfacing or maintenance issue simply click on the [Report it Online](#) section of our website. There you will be able to check if the issue has already been reported and if not, you can enter details to report the problem. The system can also provide updates on progress. Alternatively, you can email info@islandroads.com with the relevant details.

In an emergency where there is a threat to public safety, for example, a dangerous overhanging branch, please call 01983 822440. This phonenumber is manned 24 hours a day, seven days a week.

You can visit our website for more details about any of our services www.islandroads.com